



CA VA Polyclonal Antibody

Catalog No	YP-Ab-02513
Isotype	IgG
Reactivity	Human
Applications	WB;ELISA
Gene Name	CA5A
Protein Name	Carbonic anhydrase 5A mitochondrial
Immunogen	The antiserum was produced against synthesized peptide derived from human CA5A. AA range:171-220
Specificity	CA VA Polyclonal Antibody detects endogenous levels of CA VA protein.
Formulation	Liquid in PBS containing 50% glycerol, 0.5% BSA and 0.02% sodium azide.
Source	Polyclonal, Rabbit,IgG
Purification	The antibody was affinity-purified from rabbit antiserum by affinity-chromatography using epitope-specific immunogen.
Dilution	Western Blot: 1/500 - 1/2000. ELISA: 1/40000. Not yet tested in other applications.
Concentration	1 mg/ml
Purity	≥90%
Storage Stability	-20°C/1 year
Synonyms	CA5A; CA5; Carbonic anhydrase 5A; mitochondrial; Carbonate dehydratase VA; Carbonic anhydrase VA; CA-VA
Observed Band	35kD
Cell Pathway	Mitochondrion .
Tissue Specificity	Liver,Umbilical cord,
Function	catalytic activity:H(2)CO(3) = CO(2) + H(2)O.,cofactor:Zinc.,function:Reversible hydration of carbon dioxide.,similarity:Belongs to the alpha-carbonic anhydrase family.,
Background	Carbonic anhydrases (CAs) are a large family of zinc metalloenzymes that catalyze the reversible hydration of carbon dioxide. They participate in a variety of biological processes, including respiration, calcification, acid-base balance, bone resorption, and the formation of aqueous humor, cerebrospinal fluid, saliva, and gastric acid. They show extensive diversity in tissue distribution and in their subcellular localization. CA VA is localized in the mitochondria and expressed primarily in the liver. It may play an important role in ureagenesis and gluconeogenesis. CA5A gene maps to chromosome 16q24.3 and an unprocessed pseudogene has been assigned to 16p12-p11.2. [provided by RefSeq, Jul 2008],



matters needing attention

Avoid repeated freezing and thawing!

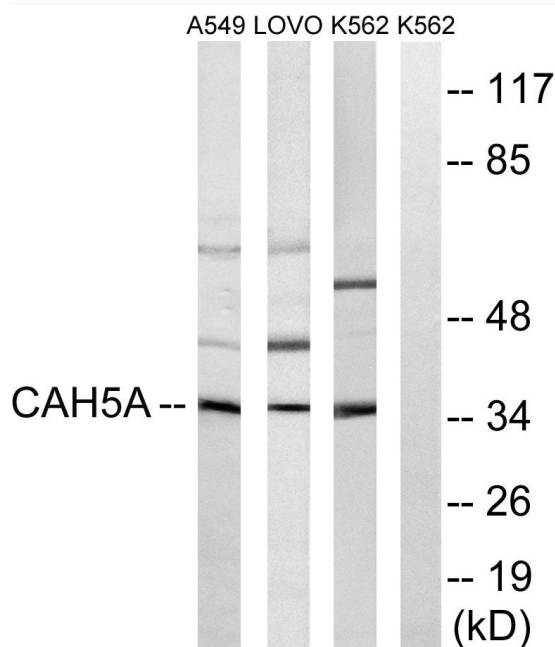
Usage suggestions

This product can be used in immunological reaction related experiments. For more information, please consult technical personnel.

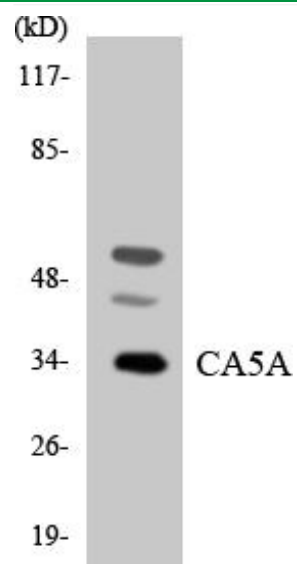
Products Images



Western Blot analysis of various cells using CA VA Polyclonal Antibody



Western blot analysis of lysates from A549, LOVO, and K562 cells, using CA5A Antibody. The lane on the right is blocked with the synthesized peptide.



Western blot analysis of the lysates from K562 cells using CA5A antibody.